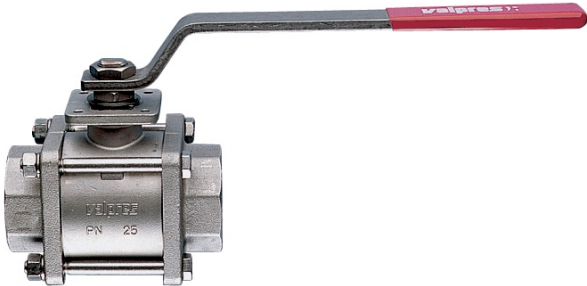


## 710060-710061-710062 STAINLESS STEEL



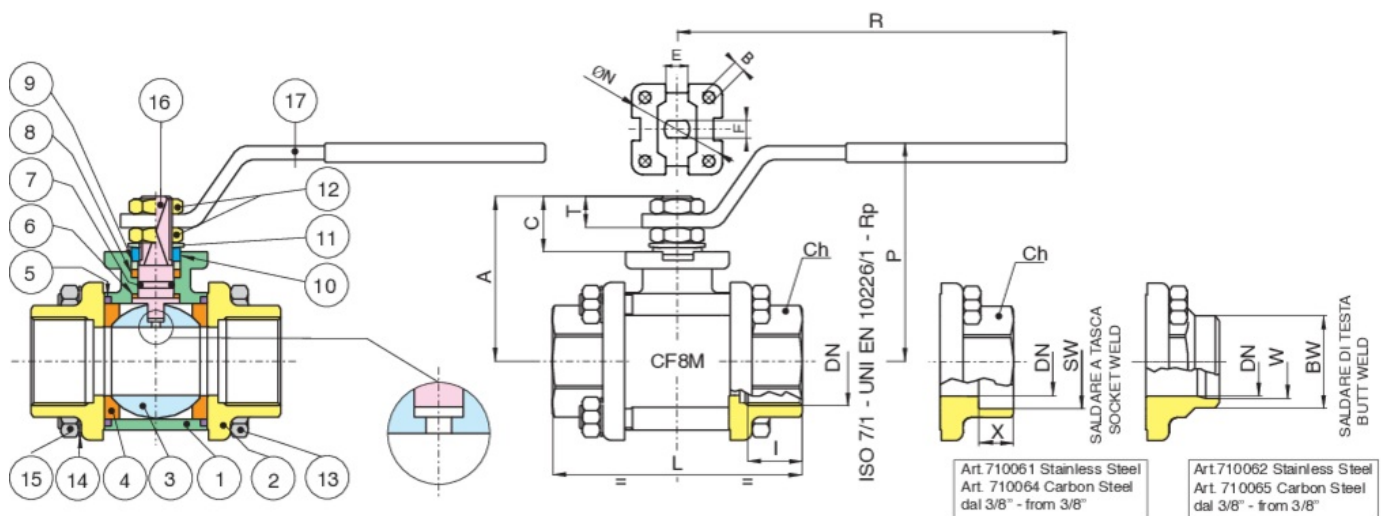
Valvola a sfera in tre pezzi in acciaio inox A351-CF8M filettata F/F a saldare di testa o tasca in tre pezzi a passaggio totale per vapore.

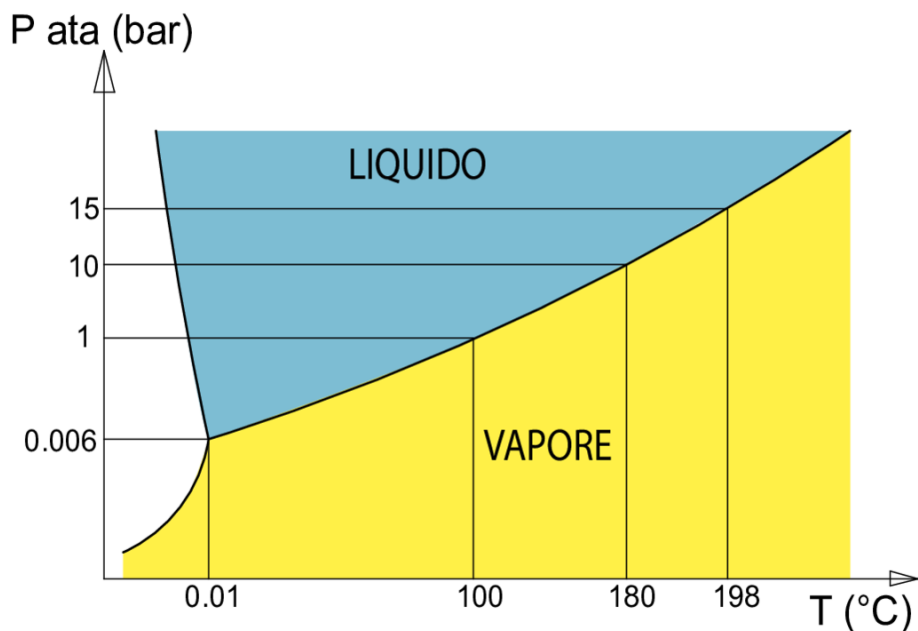
**PER VAPORE**

V-Ball option



### Specifiche tecniche





MASSIMA PRESSIONE DI ESERCIZIO CON VAPORE 15 bar.

Vuoto:  $10^{-3}$  torr.

| POSIZIONE | NOME PARTE               | MATERIALE   | N.° PEZZI |
|-----------|--------------------------|---|-----------|
| 1         | CORPO                    | A351-CF8M   | 1         |
| 2         | MANICOTTO                | A351-CF8M   | 2         |
| 3         | SFERA                    | A479-TP316/A351-CF8M                                | 1         |
| 4         | GUARNIZIONE SFERA        | PTFE+ CARBOGRAFITE                                  | 2         |
| 5         | O-RING                   | FKM   | 2         |
| 6         | RONDELLA ASTA            | PTFE+CARBOGRAFITE                                   | 1         |
| 7         | O-RING                   | FKM   | 1         |
| 8         | GUARNIZIONE ASTA         | PTFE+CARBOGRAFITE                                   | 1         |
| 9         | BUSSOLA PREMIGUARNIZIONE | INOX AISI 303 (1/4"-2") CARBON STEEL (2"1/2-3"- 4") | 1         |
| 10        | RONDELLA MEZZOGIRO       | INOX AISI 430 (1/4"-2") CARBON STEEL (2"1/2-3"- 4") | 2-1       |
| 11        | MOLLA A TAZZA            | CARBON STEEL (2"1/2-3"- 4")                         | 2         |
| 12        | DADO                     | A182-F304 (1/4"-2") CARBON STEEL (2"1/2-3"- 4")     | 2         |
| 13        | TIRANTE CORPO            | INOX AISI 304 (1-4"-2") CARBON STEEL (2"1-2-3"- 4") | 4-6       |
| 14        | RONDELLA                 | INOX AISI 304 (1-4"-2") CARBON STEEL (2"1-2-3"- 4") | 4-6       |
| 15        | DADO                     | INOX AISI 304 (1-4"-2") CARBON STEEL (2"1-2-3"- 4") | 4-6       |
| 16        | ASTA                     | A479-TP316/17-4-PH                                  | 1         |
| 17        | LEVA                     | INOX AISI 430 (1/4"-2") CARBON STEEL (2"1/2-3"- 4") | 1         |

| MISURA | DN  | CODICE                     | BOX | SW   | X    | BW    | W      | I    | L   | CH    | R   | P   | A   | C    | T    | E  | F  | ØN  | B   | KV     | PN | KG    |
|--------|-----|----------------------------|-----|------|------|-------|--------|------|-----|-------|-----|-----|-----|------|------|----|----|-----|-----|--------|----|-------|
| 1/4"   | 8   | 71006002-71006102-71006202 | 10  | -    | -    | -     | -      | 11   | 57  | OT.22 | 110 | 50  | 35  | 13,5 | 9    | 8  | 5  | -   | -   | 5,5    | 64 | 0,28  |
| 3/8"   | 10  | 71006003-71006103-71006203 | 10  | 18,2 | 9,5  | 17,1  | 12,48  | 11,4 | 57  | OT.22 | 110 | 50  | 35  | 13,5 | 9    | 8  | 5  | -   | -   | 8,5    | 64 | 0,27  |
| 1/2"   | 15  | 71006004-71006104-71006204 | 6   | 22,4 | 9,5  | 21,4  | 15,76  | 15   | 65  | OT.27 | 131 | 64  | 47  | 15   | 10   | 10 | 7  | 36  | 6   | 19,2   | 64 | 0,50  |
| 3/4"   | 20  | 71006005-71006105-71006205 | 5   | 27,7 | 11,1 | 26,7  | 20,96  | 16,3 | 76  | OT.32 | 131 | 68  | 52  | 16   | 10   | 10 | 7  | 42  | 5,5 | 35     | 40 | 0,70  |
| 1"     | 25  | 71006006-71006106-71006206 | 2   | 34,5 | 12,7 | 33,4  | 26,64  | 19,1 | 92  | OT.41 | 174 | 79  | 60  | 19,5 | 12,5 | 12 | 8  | 42  | 6   | 64,5   | 40 | 1,20  |
| 1"1/4" | 32  | 71006007-71006107-71006207 | 4   | 43,2 | 14,3 | 42,2  | 35,08  | 21,4 | 106 | OT.50 | 174 | 83  | 64  | 19,5 | 12,5 | 12 | 8  | 42  | 5,5 | 103,8  | 25 | 1,70  |
| 1"1/2" | 40  | 71006008-71006108-71006208 | 2   | 49,5 | 15,9 | 48,3  | 40,94  | 21,4 | 116 | OT.55 | 250 | 100 | 79  | 24   | 16,5 | 16 | 10 | 50  | 6,5 | 174    | 25 | 2,50  |
| 2"     | 50  | 71006010-71006110-71006210 | 2   | 62   | 17,5 | 60,3  | 52,48  | 25,7 | 136 | OT.70 | 250 | 107 | 86  | 24   | 16,5 | 16 | 10 | 50  | 6,5 | 301,3  | 25 | 3,90  |
| 2"1/2" | 65  | 71006012-71006112-71006212 | 1   | 76,5 | 20   | 73    | 62,68  | 30,2 | 153 | Ø90   | 321 | 126 | 103 | 28   | 18   | 20 | 14 | 70  | M8  | 545,7  | 16 | 8,15  |
| 3"     | 80  | 71006014-71006114-71006214 | 1   | 89,5 | 20   | 88,9  | 77,92  | 33,3 | 180 | Ø105  | 321 | 137 | 114 | 28   | 18   | 20 | 14 | 70  | M8  | 872,5  | 16 | 12,80 |
| 4"     | 100 | 71006018-71006118-71006218 | 1   | 115  | 20   | 114,3 | 102,26 | 39,3 | 217 | Ø130  | 381 | 156 | 137 | 34,5 | 22   | 24 | 18 | 102 | M10 | 1363,3 | 16 | 21,50 |

# Certificazioni



TUV



ATEX (A richiesta)

SIL 3

SIL 3

## Ricambi

### ● LEVE

| Codice | Materiale | Misura |
|--------|-----------|--------|
| RI2012 | AISI 430  | 1/4"   |
| RI2012 | AISI 430  | 3/8"   |
| RI2013 | AISI 430  | 1/2"   |
| RI2013 | AISI 430  | 3/4"   |
| RI2014 | AISI 430  | 1"     |
| RI2014 | AISI 430  | 1"1/4  |
| RI2015 | AISI 430  | 1"1/2  |
| RI2015 | AISI 430  | 2"     |
| RI2016 | A 37      | 2"1/2  |
| RI2016 | A 37      | 3"     |
| RI2017 | A 37      | 4"     |

### ● SFERE

| Codice      | Materiale | Misura |
|-------------|-----------|--------|
| 00301000002 | AISI 316  | 1/4"   |
| 00301000002 | AISI 316  | 3/8"   |
| 00304000037 | AISI 316  | 1/2"   |
| 00305000031 | AISI 316  | 3/4"   |
| 00306000031 | AISI 316  | 1"     |
| 00307000028 | AISI 316  | 1"1/4  |
| 00308000025 | AISI 316  | 1"1/2  |
| 00310000079 | AISI 316  | 2"     |
| 00312000006 | AISI 316  | 2"1/2  |
| 00314000012 | AISI 316  | 3"     |
| 00318007001 | AISI 316  | 4"     |

### ● ASTE

| Codice      | Materiale | Misura |
|-------------|-----------|--------|
| 00401000003 | AISI 316  | 1/4"   |
| 00401000003 | AISI 316  | 3/8"   |
| 00405000029 | AISI 316  | 1/2"   |
| 00405000029 | AISI 316  | 3/4"   |
| 00406000011 | AISI 316  | 1"     |
| 00406000011 | AISI 316  | 1"1/4  |
| 00408000010 | AISI 316  | 1"1/2  |
| 00408000010 | AISI 316  | 2"     |
| 00412000021 | AISI 316  | 2"1/2  |
| 00412000021 | AISI 316  | 3"     |
| 00418000021 | AISI 316  | 4"     |

● GUARNIZIONI PER VAPORE

| Codice | Materiale                              | Misura |
|--------|--|--------|
| RI1074 | PTFE CARBOGRAFITE - CARBON FILLED PTFE | 1/4"   |
| RI1074 | PTFE CARBOGRAFITE - CARBON FILLED PTFE | 3/8"   |
| RI1075 | PTFE CARBOGRAFITE - CARBON FILLED PTFE | 1/2"   |
| RI1076 | PTFE CARBOGRAFITE - CARBON FILLED PTFE | 3/4"   |
| RI1077 | PTFE CARBOGRAFITE - CARBON FILLED PTFE | 1"     |
| RI1078 | PTFE CARBOGRAFITE - CARBON FILLED PTFE | 1"1/4  |
| RI1079 | PTFE CARBOGRAFITE - CARBON FILLED PTFE | 1"1/2  |
| RI1080 | PTFE CARBOGRAFITE - CARBON FILLED PTFE | 2"     |
| RI1081 | PTFE CARBOGRAFITE - CARBON FILLED PTFE | 2"1/2  |
| RI1082 | PTFE CARBOGRAFITE - CARBON FILLED PTFE | 3"     |
| RI1083 | PTFE CARBOGRAFITE - CARBON FILLED PTFE | 4"     |