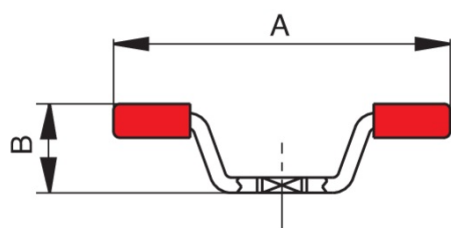


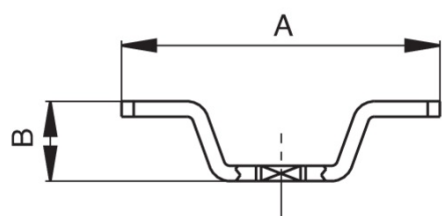


Farfalla in acciaio inox.

## Specifiche tecniche



RI2028  
Plastificata rossa  
Red P.V.C. cover



RI2974  
Lucida  
Polished

MISURA	DN	CODICE	A	B	MISURA-SIZE	MATERIALE-MATERIAL	ASSEMBLAGGIO-TYPE
-	-	RI2028	55	14,5	1/8"-1/4"-3/8"-1/2"	ACCIAIO INOX-STAINLESS STEEL	700000
-	-	RI2974	52	13	1/8"-1/4"-3/8"-1/2"	ACCIAIO INOX-STAINLESS STEEL	701000