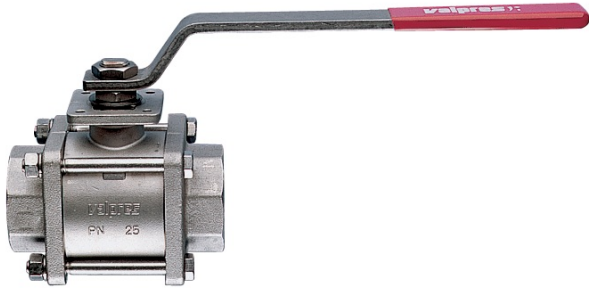


# 710060-710061-710062



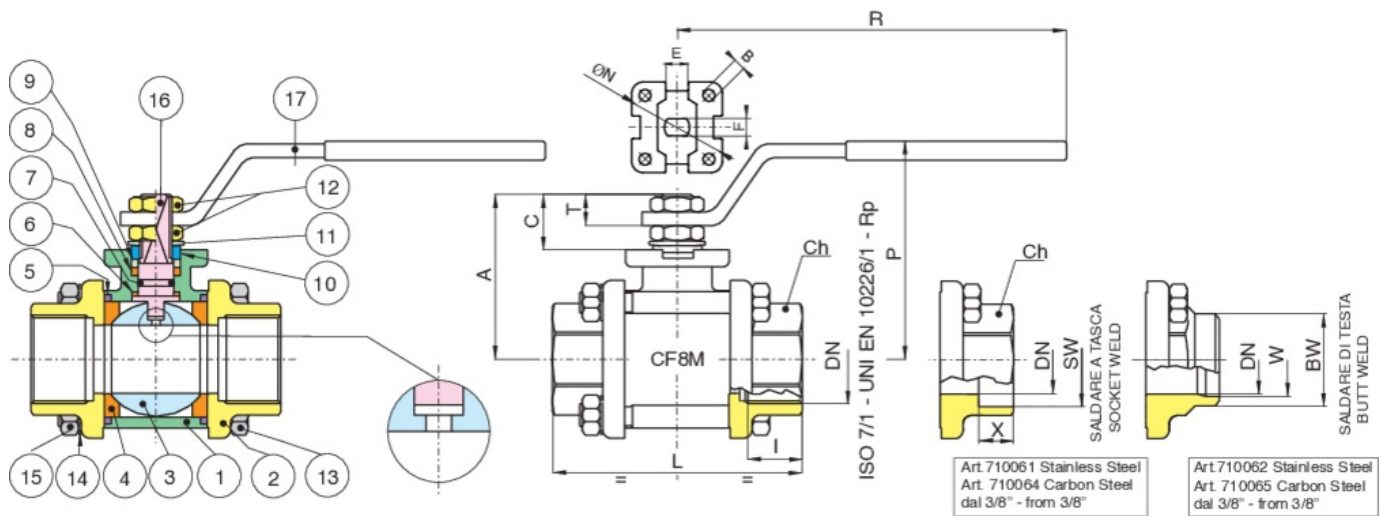
Three-piece full bore A351-CF8M ball valve: threaded F/F, butt/socket-welded suitable for steam.

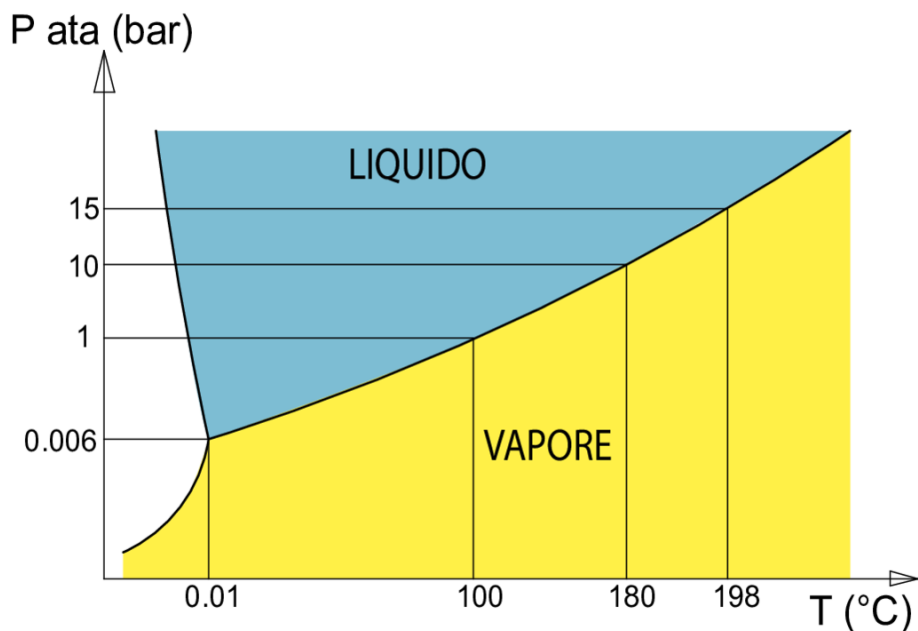
**FOR STEAM**

**V-Ball option**



## Technical specifications





MAXIMUM WORKING PRESSURE WITH STEAM 15 bar.

Vacuum:  $10^{-3}$  torr.

POSITION	PART NAME	MATERIAL	N.° PIECES
1	BODY	A351-CF8M	1
2	END CONNECTION	A351-CF8M	2
3	BALL	A479-TP316/A351-CF8M	1
4	BALL SEAT	PTFE+ CARBOGRAFITE	2
5	O-RING	FKM	2
6	THRUST WASHER	PTFE+CARBOGRAFITE	1
7	O-RING	FKM	1
8	STEM SEAT	PTFE+CARBOGRAFITE	1
9	PACKING GLAND	INOX AISI 303 (1/4"-2") CARBON STEEL (2"1/2-3"- 4")	1
10	END STOP	INOX AISI 430 (1/4"-2") CARBON STEEL (2"1/2-3"- 4")	2-1
11	SPRING WASHER	CARBON STEEL (2"1/2-3"- 4")	2
12	NUT	A182-F304 (1/4"-2") CARBON STEEL (2"1/2-3"- 4")	2
13	BOLT	INOX AISI 304 (1-4"-2") CARBON STEEL (2"1-2-3"- 4")	4-6
14	WASHER	INOX AISI 304 (1-4"-2") CARBON STEEL (2"1-2-3"- 4")	4-6
15	NUT	INOX AISI 304 (1-4"-2") CARBON STEEL (2"1-2-3"- 4")	4-6
16	STEM	A479-TP316/17-4-PH	1
17	HANDLE	INOX AISI 430 (1/4"-2") CARBON STEEL (2"1/2-3"- 4")	1

SIZE	DN	CODE	BOX	SW	X	BW	W	I	L	CH	R	P	A	C	T	E	F	ØN	B	KV	PN	KG
1/4"	8	71006002-71006102-71006202	10	-	-	-	-	11	57	OT.22	110	50	35	13,5	9	8	5	-	-	5,5	64	0,28
3/8"	10	71006003-71006103-71006203	10	18,2	9,5	17,1	12,48	11,4	57	OT.22	110	50	35	13,5	9	8	5	-	-	8,5	64	0,27
1/2"	15	71006004-71006104-71006204	6	22,4	9,5	21,4	15,76	15	65	OT.27	131	64	47	15	10	10	7	36	6	19,2	64	0,50
3/4"	20	71006005-71006105-71006205	5	27,7	11,1	26,7	20,96	16,3	76	OT.32	131	68	52	16	10	10	7	42	5,5	35	40	0,70
1"	25	71006006-71006106-71006206	2	34,5	12,7	33,4	26,64	19,1	92	OT.41	174	79	60	19,5	12,5	12	8	42	6	64,5	40	1,20
1"1/4"	32	71006007-71006107-71006207	4	43,2	14,3	42,2	35,08	21,4	106	OT.50	174	83	64	19,5	12,5	12	8	42	5,5	103,8	25	1,70
1"1/2"	40	71006008-71006108-71006208	2	49,5	15,9	48,3	40,94	21,4	116	OT,55	250	100	79	24	16,5	16	10	50	6,5	174	25	2,50
2"	50	71006010-71006110-71006210	2	62	17,5	60,3	52,48	25,7	136	OT.70	250	107	86	24	16,5	16	10	50	6,5	301,3	25	3,90
2"1/2"	65	71006012-71006112-71006212	1	76,5	20	73	62,68	30,2	153	Ø90	321	126	103	28	18	20	14	70	M8	545,7	16	8,15
3"	80	71006014-71006114-71006214	1	89,5	20	88,9	77,92	33,3	180	Ø105	321	137	114	28	18	20	14	70	M8	872,5	16	12,80
4"	100	71006018-71006118-71006218	1	115	20	114,3	102,26	39,3	217	Ø130	381	156	137	34,5	22	24	18	102	M10	1363,3	16	21,50

# Certifications



TUV



ATEX (On request)

SIL 3

SIL 3

## Spare Parts

### ● HANDLES

Code	Material	Size
RI2012	AISI 430	1/4"
RI2012	AISI 430	3/8"
RI2013	AISI 430	1/2"
RI2013	AISI 430	3/4"
RI2014	AISI 430	1"
RI2014	AISI 430	1"1/4
RI2015	AISI 430	1"1/2
RI2015	AISI 430	2"
RI2016	A 37	2"1/2
RI2016	A 37	3"
RI2017	A 37	4"

### ● BALL

Code	Material	Size
00301000002	AISI 316	1/4"
00301000002	AISI 316	3/8"
00304000037	AISI 316	1/2"
00305000031	AISI 316	3/4"
00306000031	AISI 316	1"
00307000028	AISI 316	1"1/4
00308000025	AISI 316	1"1/2
00310000079	AISI 316	2"
00312000006	AISI 316	2"1/2
00314000012	AISI 316	3"
00318007001	AISI 316	4"

### ● STEMS

Code	Material	Size
00401000003	AISI 316	1/4"
00401000003	AISI 316	3/8"
00405000029	AISI 316	1/2"
00405000029	AISI 316	3/4"
00406000011	AISI 316	1"
00406000011	AISI 316	1"1/4
00408000010	AISI 316	1"1/2
00408000010	AISI 316	2"
00412000021	AISI 316	2"1/2
00412000021	AISI 316	3"
00418000021	AISI 316	4"

● SEATS FOR STEAM

Code	Material	Size
RI1074	PTFE CARBOGRAFITE - CARBON FILLED PTFE	1/4"
RI1074	PTFE CARBOGRAFITE - CARBON FILLED PTFE	3/8"
RI1075	PTFE CARBOGRAFITE - CARBON FILLED PTFE	1/2"
RI1076	PTFE CARBOGRAFITE - CARBON FILLED PTFE	3/4"
RI1077	PTFE CARBOGRAFITE - CARBON FILLED PTFE	1"
RI1078	PTFE CARBOGRAFITE - CARBON FILLED PTFE	1"1/4
RI1079	PTFE CARBOGRAFITE - CARBON FILLED PTFE	1"1/2
RI1080	PTFE CARBOGRAFITE - CARBON FILLED PTFE	2"
RI1081	PTFE CARBOGRAFITE - CARBON FILLED PTFE	2"1/2
RI1082	PTFE CARBOGRAFITE - CARBON FILLED PTFE	3"
RI1083	PTFE CARBOGRAFITE - CARBON FILLED PTFE	4"